

# SafeTrace®

## BTS Steam Tracer

### Product Specifications

#### Application . . .

SafeTrace BTS is a metallic tracer tube covered with a special high temperature polymer jacket<sup>1</sup>. The SafeTrace BTS jacket provides a measure of personnel burn protection without sacrificing thermal performance when compared to bare metal tube tracers installed on a pipe. SafeTrace BTS tracers utilise a safety yellow identification jacket<sup>2</sup> to signify materials inherently dangerous such as steam per ASME/ANSI A13.1-1996.

SafeTrace BTS is supplied in long length coils and may be installed anywhere bare tracing is specified.

#### Specifications/Ratings . . .

Available tube diameters.....3/8" & 1/2"  
and 10 mm & 12 mm  
Available tube materials .....copper & stainless steel  
Typical pipe temperature range .....38°C to 121°C  
Maximum exposure temperature..... 215°C  
Minimum installation temperature..... -40°C  
Max. recommended steam pressure..... 1825 kPa

#### Benefits . . .

- Significantly reduces risk of burns
- Superior corrosion resistance to most acids and alkalis
- Lower installed costs—long length coils reduce the number of tube fittings and lower maintenance costs
- Simple tape-on installation
- Quick delivery
- Free design assistance

#### Notes . . .

1. Patent pending.
2. Thermon does not purport to address all of the safety issues, if any, associated with the use of Thermon products when handling steam or other dangerous materials. It is the responsibility of the user to establish appropriate practices to ensure compliance with local health and safety legislation.



#### Construction . . .

- 1 Copper or Stainless Steel Tube
- 2 Safety Yellow Polymer Jacket



**Typical BTS Cross Section**  
(Tracer attached to pipe with FT-1H tape)



**THERMON . . . The Heat Tracing Specialists®**  
www.thermon.com

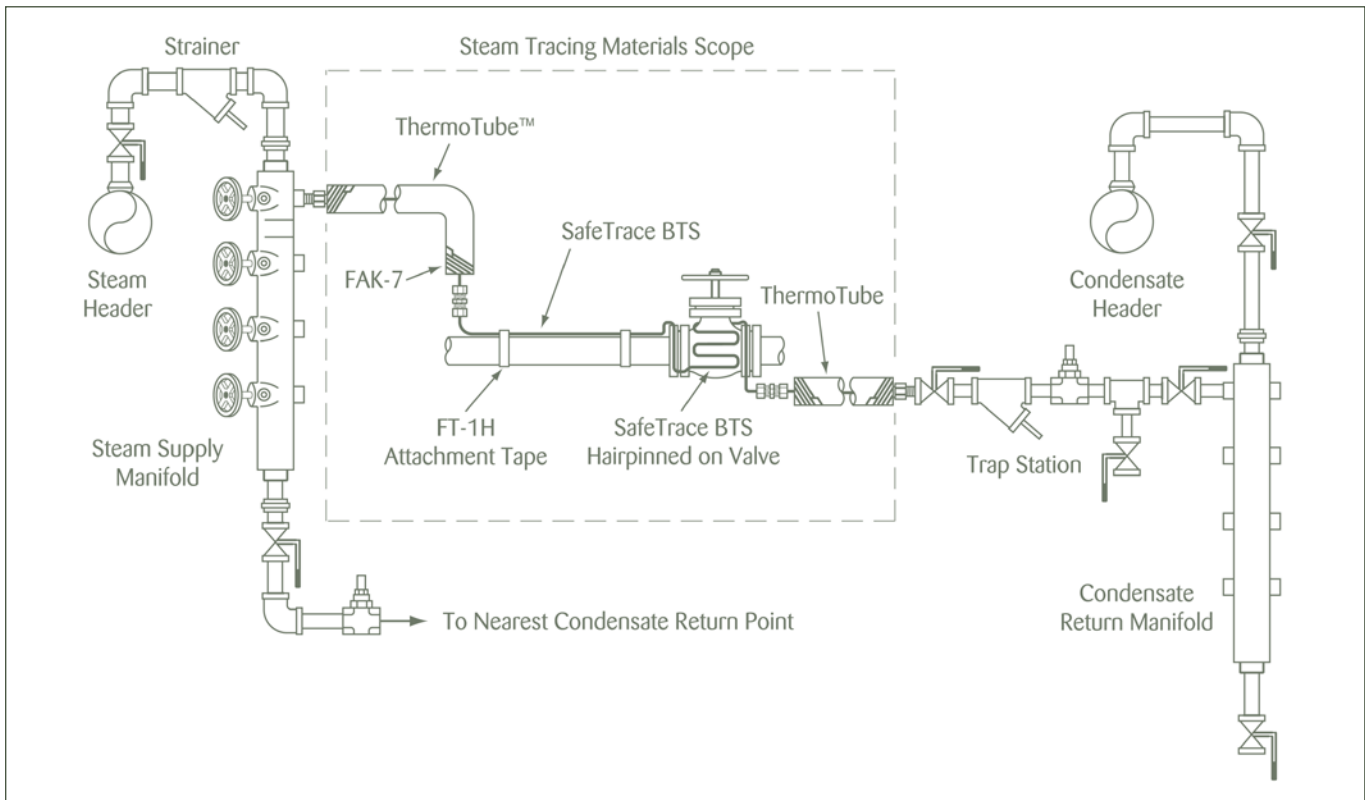
European Headquarters  
Boezemweg 25 • PO Box 205  
2640 AE Pijnacker • The Netherlands  
Phone: +31 (0) 15-36 15 370

Corporate Headquarters  
100 Thermon Dr. • PO Box 609  
San Marcos, TX 78667-0609 • USA  
Phone: +1 512-396-5801

For the Thermon office nearest you  
visit us at . . .  
[www.thermon.com](http://www.thermon.com)



**Typical Steam Tracing System . . .**



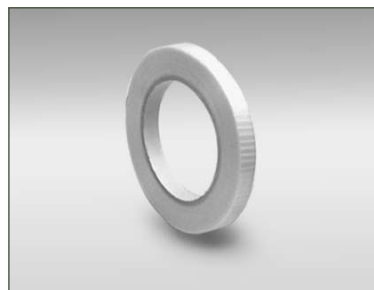
**Product Configurations . . .**

Product Type	Tube Material <sup>1</sup>	Tube Dia. (O.D.)	Wall Thickness
BTS-3B32	Copper	3/8"	0.032"
BTS-4B35	Copper	1/2"	0.035"
BTS-3A35	SS Welded	3/8"	0.035"
BTS-4A35	SS Welded	1/2"	0.035"
BTS-3F35	SS Seamless	3/8"	0.035"
BTS-4F35	SS Seamless	1/2"	0.035"
BTS-10B1	Copper	10 mm	1 mm
BTS-12B1	Copper	12 mm	1 mm
BTS-10A1	SS Welded	10 mm	1 mm
BTS-12A1	SS Welded	12mm	1 mm
BTS-10F1	SS Seamless	10 mm	1 mm
BTS-12F1	SS Seamless	12 mm	1 mm

**Notes . . .**

1. Copper tubing meets ASTM Std B68-B75. Stainless steel tubing meets ASTM Std A269.
2. All imperial tubes are available in 0.049" wall thickness; contact Thermon.

**Basic Accessories . . .**



**FT-1H...**polyester fibre tape for circumferential banding of SafeTrace BTS to piping every 30 cm or as required by code or specification. Tape is 12 mm wide x 33 m long and has a maximum exposure temperature of 260°C.

**Related Materials . . .**

Connections between the steam and condensate headers and the SafeTrace BTS may be accomplished with ThermoTube preinsulated tubing (available in numerous configurations to meet the requirements of the application). For information on ThermoTube preinsulated tubing, refer to Form TSP0009U.

